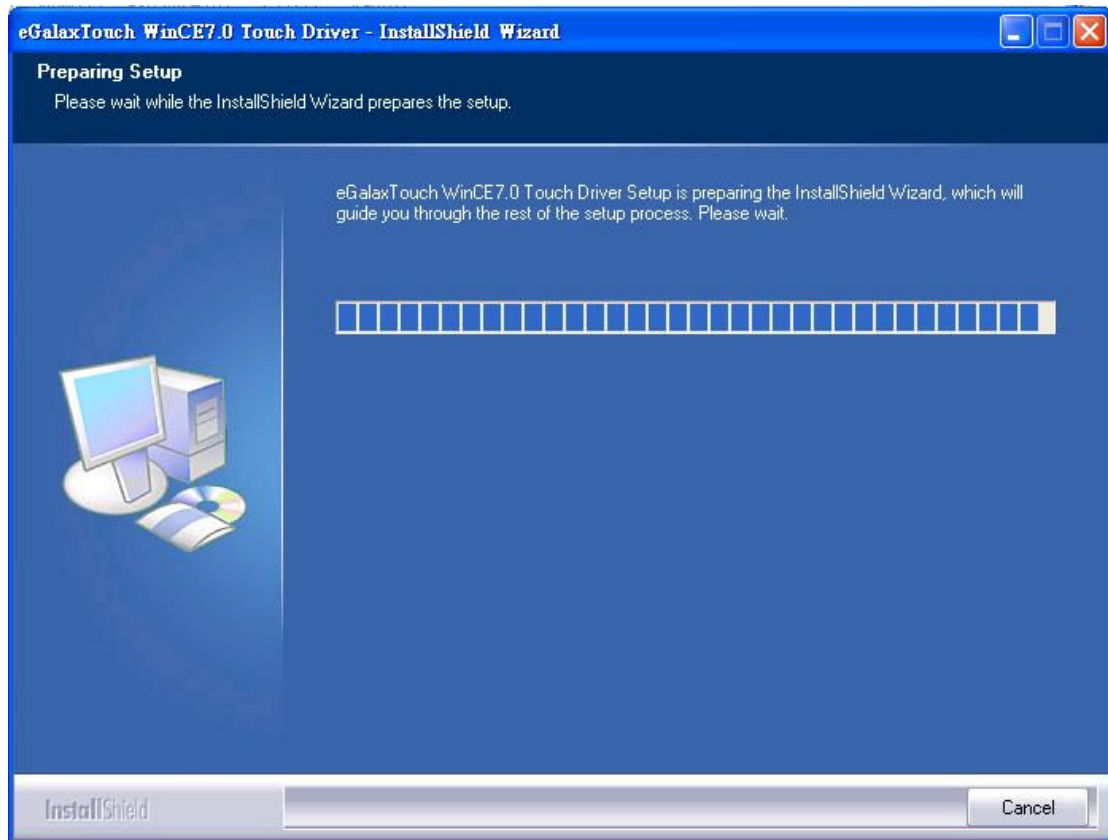


eGalaxTouch WinCE Touch Driver Installation Guide

Operation System: Windows Embedded Compact7

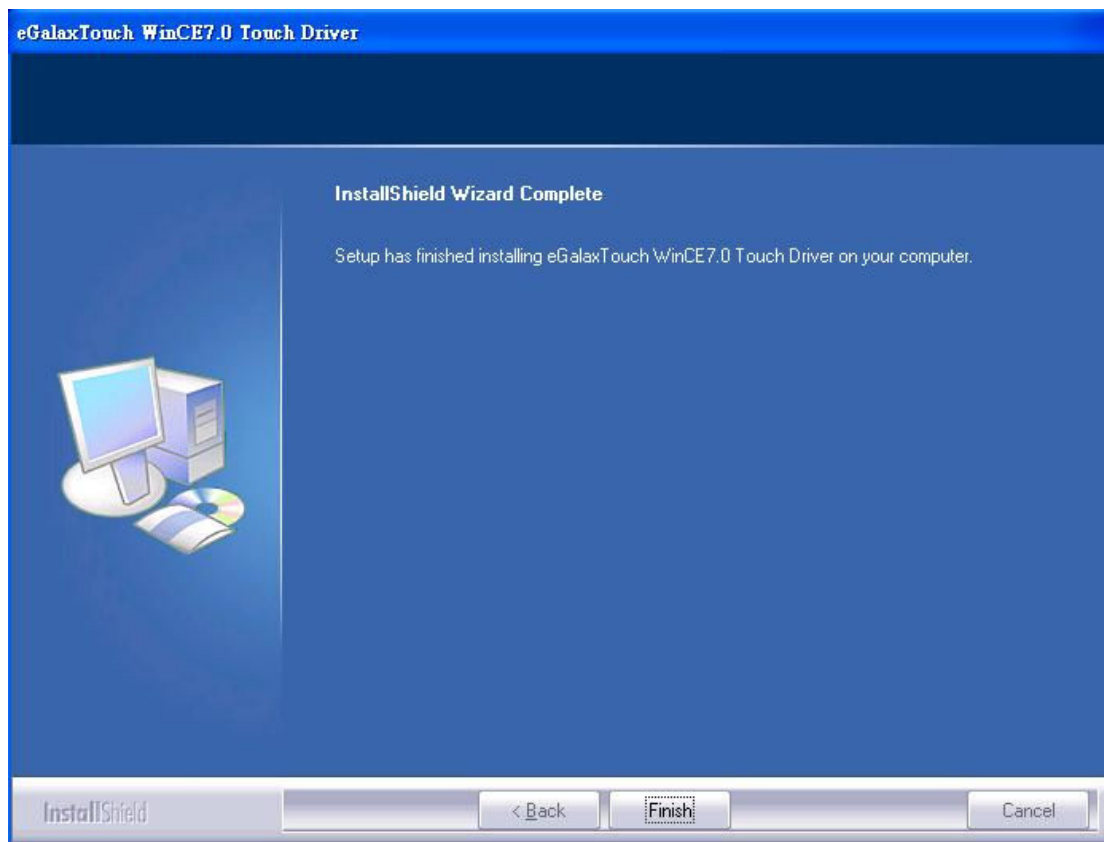
1. Execute setup.exe, you will see the installation window.



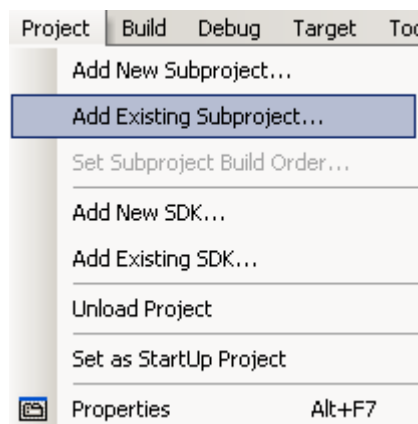
2. Select Yes to continue the installation, or select No to cancel it.



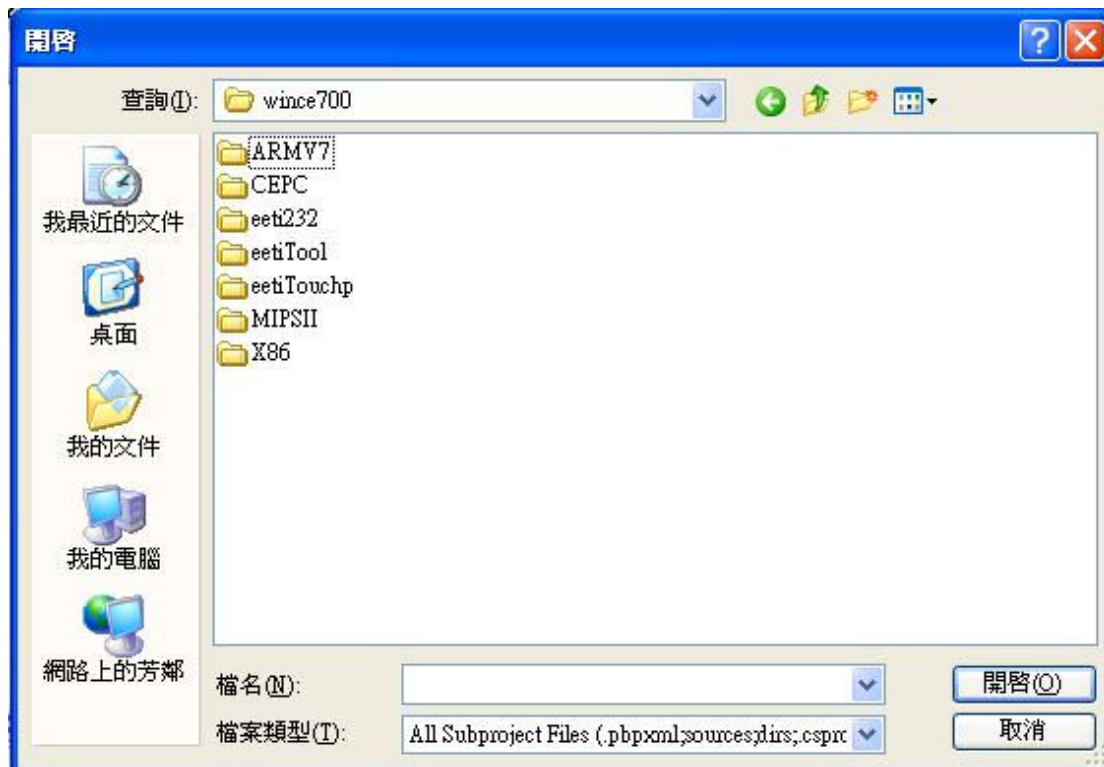
- When installation successfully finish, you will see the window. Click Finish to close the installation window.



- Launch Visual Studio 2008 with Platform Builder WinCE7.0. Open your OSDesign which you want to install eGalaxTouch Touch Driver.
- Select Project → Add Existing Subproject



6. Switch the folder to C:\EETICEDB-SERIAL\wince700



7. To add subprojects into your OSDesign, Choose the pbpxml file under different folder. (i.e. eeti232, eetiTool and eetiTouchp)

[For RS232 Controller]

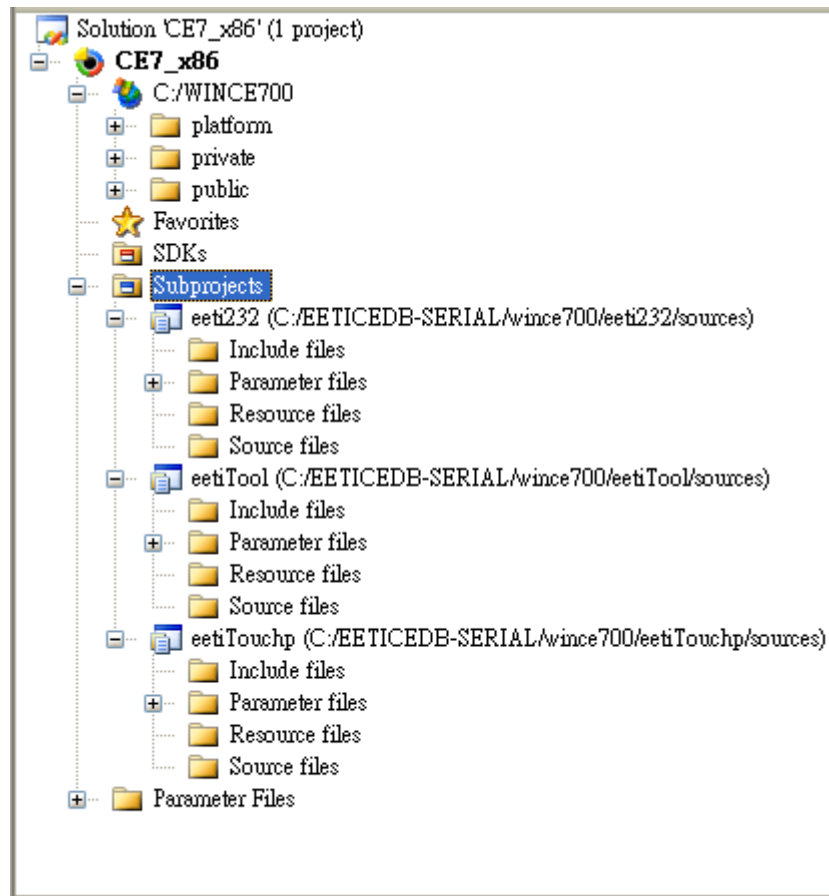
Add **eeti 232** and **eetiTouchp** subprojects into your OSDesign

[For utility]

Add **eetiTool** subprojects into your OSDesign

8. After you add catalog items, you will find the subprojects inside your OSDesign.

eGalaxTouch WinCE Touch Driver Installation Guide



9. Select Build → Make Run-Time Image to make the new image.

WinCE7.0 Gesture Components:

If you wish to add WinCE built-in gesture engine, please add these component in you OSDesign.

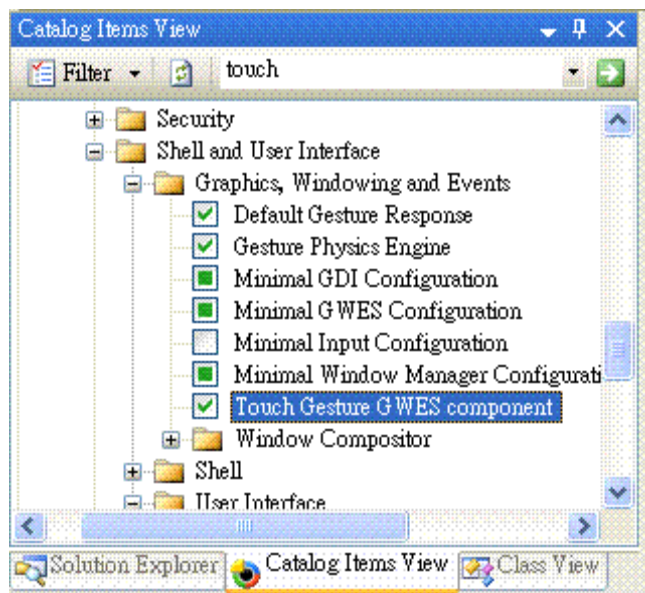
1. Default Gesture Response
2. Gesture Physics Engine
3. Touch Gesture GWES component

These settings make sysgen flags set:

SYSGEN_TOUCHGESTURE

SYSGEN_GESTUREANIMATION

SYSGEN_PHYSICSENGINE



Notes:

1. [For RS232 Controller] Select the COM port which touch device is using, please modify eeti232.reg

[HKEY_LOCAL_MACHINE\Drivers\BuiltIn\TouchKit1]

"Dll"="TouchKit.dll"

"Order"=dword:FF

"Prefix"="TKT"

"Index"=dword:00000001

"Context"=dword:1; → This is the COM Port setting.

If the COM port is COM1 , please set the “Context” value in 1.

If the COM port is COM2 , please set the “Context” value in 2.

2. [For RS232 Controller] Set baud rate of driver , please modify eeti232.reg

[HKEY_LOCAL_MACHINE\HARDWARE\DEVICEMAP\TOUCH]

"Baud"=dword:2580 → The baud rate is 9600

If the baud rate is 19200 , please set the value in 4B00

If the baud rate is 57600 , please set the value in E100

If the baud rate is 115200 , please set the value in 1C200

3. You can uninstall the catalog items in platform builder by execute setup.exe again.

Driver Registry Settings:

Settings for eetiTouchp.reg:

[HKEY_LOCAL_MACHINE\Drivers\TouchKit]

Registry Key	Type	Description
SoundType	dword	SoundType = 0 is no sound SoundType = 1 is Beep in touch down. SoundType = 2 is Beep in lift off.
BeepFrequency	dword	Beep Frequency. Not limited. But suggest 64~1FA(Hexadecimal)
BeepTime	dword	Beep Duration. Not limited. But suggest 19~1F4(Hexadecimal)
EdgeCompEn	dword	Edge compensation enable For some special touchscreen which can not reach to the edge area of the full screen. User can modify these edge compensation parameters to solve such problem and make it easy to touch the edge area without accuracy lost. Stretch a little bit near the edge area.
EdgeCompUp	dword	Edge compensation upper bound parameter. The unit is percent. Default value is 64(Hexadecimal) If cursor point can not reach to edge area , user can increase this value.
EdgeCompDown	dword	Edge compensation lower bound parameter The unit is percent. Default value is 64(Hexadecimal) If cursor point can not reach to edge area , user can increase this value.
EdgeCompLeft	dword	Edge compensation left bound parameter The unit is percent. Default value is 64(Hexadecimal) If cursor point can not reach to edge area , user can increase this value.
EdgeCompRight	dword	Edge compensation right bound parameter The unit is percent. Default value is 64(Hexadecimal) If cursor point can not reach to edge area , user can



禾瑞亞科技股份有限公司
eGalax_eMPTA Technology Inc.

eGalaxTouch WinCE Touch Driver Installation Guide

		increase this value.
HalfVGA	dword	Touch mapping to screen parameter for split display: (All display resolution must be the same.) HalfVGA=1: touch only on upper half of screen HalfVGA=2: touch only on lower half of screen HalfVGA=3: touch only on right half of screen HalfVGA=4: touch only on left half of screen
FLAGS	dword	FLAGS = 200(Hexadecimal) : for enable rotate touch point data. Then user can set "FixedRotateInfo".
FixedRotateInfo	dword	You must set "FLAGS" to enable rotate touch point data first. 0 : not rotate 1 : rotate to 90 degree 2: rotate to 180 degree 3 : rotate to 270 degree